

A warehouse scene with a forklift operator and a safety officer. The operator, wearing a blue hard hat and a yellow safety vest, is driving a yellow forklift. The safety officer, wearing a yellow hard hat and a yellow safety vest, is standing next to the forklift, holding a clipboard. The background shows high industrial shelving units filled with boxes.

# TRIOMOBIL

Industrial Safety with AI

**Maximize Industrial  
Safety and Efficiency  
with AI-Powered IoT Technology**

OUR MISSION

**ZERO  
ACCIDENTS.  
MAXIMUM  
SAFETY.**



## ABOUT US

# Technologies to Help Every Employee Return Home Safely

Operating in 65+ countries, Trio Mobil delivers AI and IoT-powered safety solutions tailored for industrial environments. With a strong focus on **innovation** and a **customer-first approach**, we create smarter, safer, and more efficient workplaces.



1M

Connected Devices  
Worldwide



2,000+

Global  
Customers



65+

Countries  
and Growing



Inhouse R&D for  
both HW and SW



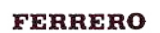
Customer-Focused  
Approach



Pioneer of  
AI and IoT

## OUR CUSTOMERS

# Trusted by Industry Leaders Worldwide




Trio Mobil provides cutting-edge turnkey solutions in 65 countries, enhancing safety and efficiency in over 2,000 facilities worldwide.



# 360° PROTECTION



 UP TO **20%**  
INCREASE IN  
EFFICIENCY

 UP TO **98%**  
REDUCTION IN  
NEAR-MISS CASES

**2,000+**  
GLOBAL  
INSTALLATIONS





**Pioneering Technology and Solutions  
for Workplace Safety**



FORKLIFT - PEDESTRIAN  
ACCIDENT PREVENTION

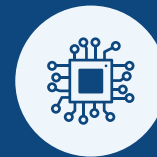
ZONE - BASED  
FORKLIFT SAFETY

Pedestrian



**TRIO SAFE-AI**

AI-Powered Forklift  
and Pedestrian Safety



**TRUE-AI**

The Revolutionary AI Camera for  
Workplace Safety

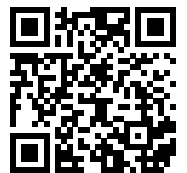


# TRIO SAFE-AI

An aerial view of a warehouse floor. In the center, a grey forklift is carrying a large, wrapped pallet. A worker in a yellow hard hat and safety vest stands to the left, holding a clipboard. To the right, two workers in yellow safety vests and white hard hats are looking at a document. Another worker in a yellow safety vest and white hard hat is at the bottom right, looking at a device. The floor is marked with large, concentric blue circles emanating from the forklift, representing a safety zone. The background shows stacks of cardboard boxes on the left.

**Discover More!**

Scan the QR code to watch our company video and explore  
**Trio Mobil's cutting-edge safety solutions** in action.





# AI-Powered Forklift Safety, Accident Prevention System

**90%** of forklift accidents result from limited visibility.  
TRIO SAFE-AI leverages AI and UWB technology to prevent collisions,  
even in blind spots.

TRIO SAFE-AI enhances workplace safety by:

## HIGH-PRECISION PROXIMITY DETECTION WITH AI & UWB

Detects pedestrians, forklifts, and material handling equipment (MHEs) in real time using both **tag-based and tagless detection**, providing **360° coverage** indoors and outdoors without requiring Wi-Fi or a cellular connection.

## INTELLIGENT SPEED REDUCTION

**Automatically slows forklifts** near pedestrians or other MHEs with adaptive one- or two-phase speed reduction.

## REAL-TIME AUDIOVISUAL ALERTS

**Instantly warns operators** to prompt quick accident prevention.



With TRIO SAFE-AI, workplaces benefit from **smarter, safer operations.**

## FORKLIFT - PEDESTRIAN ACCIDENT PREVENTION

- Detects pedestrians **with or without tags** using forklift-mounted AI cameras and UWB detection technology.
- Triggers **real-time alerts** for operators and pedestrians.
- Applies **two-stage speed reduction** to prevent accidents.



## FORKLIFT / FORKLIFT - AGV COLLISION AVOIDANCE

- Detects approaching forklifts and other material handling equipment (MHE), including lift trucks and AGVs.
- Delivers real-time alerts and dynamically **reduces speed based on proximity**, enhancing safety and operational efficiency.



## LED SIGNALING & SMART TRAFFIC MANAGEMENT

- Activates LED signals to **enhance visibility** and alert both pedestrians and forklifts.
- Seamlessly integrates with traffic lights and projection systems for optimized traffic flow and safety.



## ZONE-BASED FORKLIFT SAFETY

- Automatically **reduces forklift speed** in designated high-risk areas, such as intersections, blind spots, and pedestrian zones.
- Minimizes the risk of rollovers and collisions by intelligently controlling speed and enhancing situational awareness.





TRIO SAFE-AI system provides detailed safety analytics, offering:

## AI-POWERED VISION INSIGHTS

Real-time analysis of workplace safety events, **detecting potential risks before they lead to incidents.**

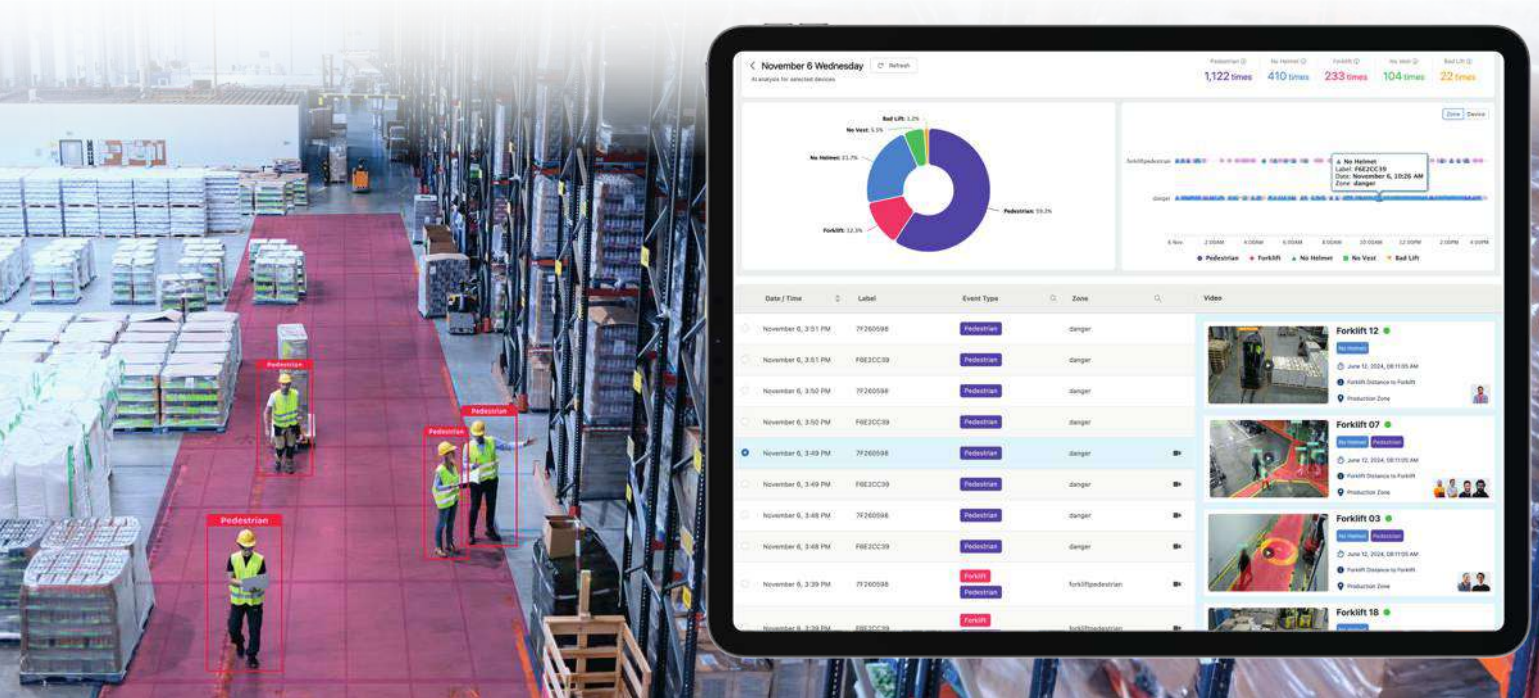
## EVENT RECORDINGS & PLAYBACK

Captures and stores safety-related incidents for **detailed review** and **compliance reporting.**

## COMPREHENSIVE SAFETY STATISTICS

Tracks **collision risks** and **near-miss events** to enhance workplace safety.

With **data-driven insights** and **AI-powered event monitoring**, TRIO SAFE-AI helps businesses **identify risks, improve safety measures, and reduce workplace accidents.**



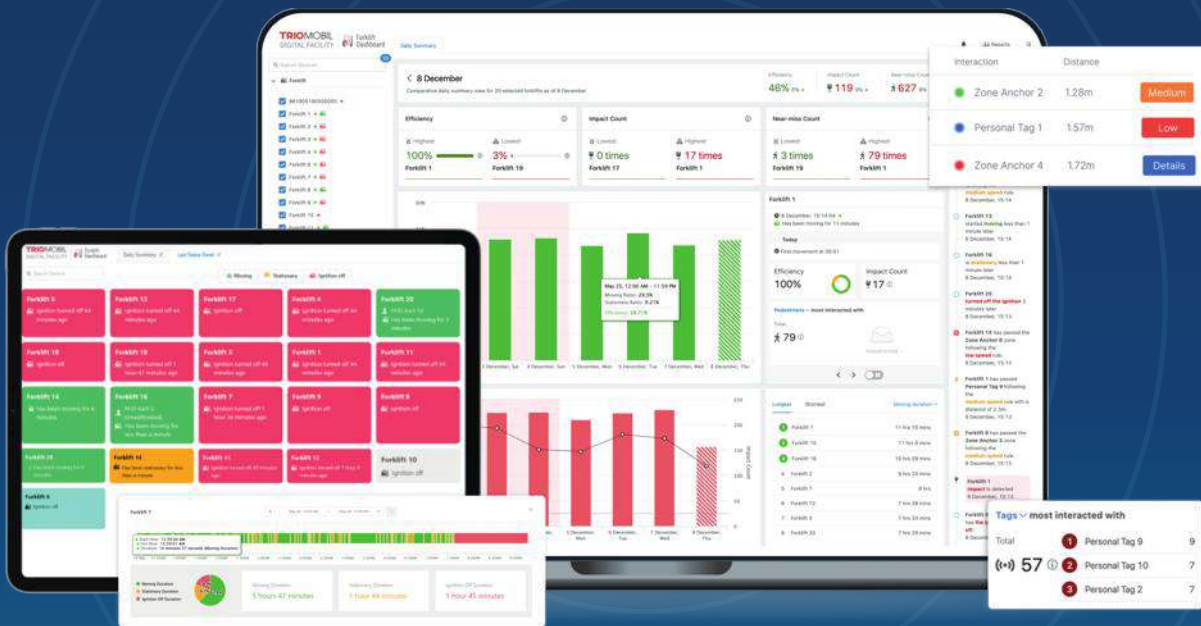
# FLEET BRIDGE





# Forklift Fleet Management In One Place

FLEET BRIDGE provides an integrated forklift fleet management solution, combining cutting-edge hardware and cloud technology. The system enhances forklift efficiency by **up to 30%**, monitors impacts, and offers data insights for enhanced operations and safety.



## FLEET BRIDGE



**OPERATOR ACCESS  
CONTROL**



**IMPACT DETECTION  
& MANAGEMENT**



**REAL-TIME  
ALARMS**



**PRE-OPERATION  
CHECKLIST**



**FORKLIFT EFFICIENCY  
REPORTING**



**OPERATOR  
PRODUCTIVITY**



# TRUE-AI

**Forklift**

**Pedestrian**

**Pedestrian**





# Real-Time AI Camera for Workplace Safety

TRUE-AI delivers high-precision solutions across various occupational safety scenarios by performing image processing and analysis using Deep Learning and Edge Computing.

TRUE-AI enhances workplace safety by:

## REAL-TIME DETECTION

Utilizes **AI cameras** and **image processing** to identify **pedestrians**, **forklifts**, and **vehicles**, reducing collision risks.

## ENHANCED VISIBILITY

Offers a **bird's-eye view** to **eliminate blind spots**, improving safety in **high-risk areas** with precise monitoring.

## INSTANT SAFETY ACTIONS

Integrates with **third-party systems**, **machines**, **audio alerts**, and **TRIO SAFE**, triggering **safety measures within milliseconds** to prevent accidents.



## FORKLIFT SAFETY & COLLISION AVOIDANCE

TRUE-AI **detects pedestrians** in the designated zones with image processing and AI algorithms. UWB integration **can automatically slow down** a forklift if a pedestrian is within a designated zone. **An audiovisual alert warns** the forklift operator.



## LOADING DOCK SAFETY

TRUE-AI enhances loading dock safety by detecting **pedestrians** and **vehicles**, activating safety outputs such as **traffic lights**, **an audio alert system** that alerts pedestrians and drivers, and door control through sensors. The system can integrate with **an electrical wheel chock system** and **a hydraulic locker** for an additional layer of safety.





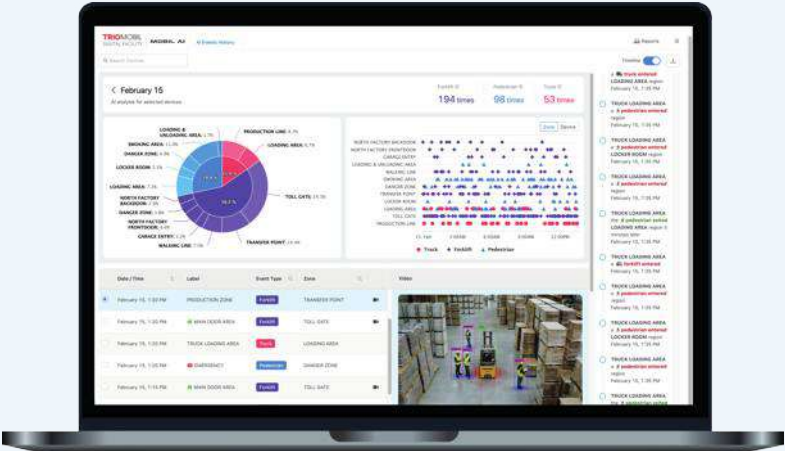
MACHINE ZONE SAFETY & ACCIDENT PREVENTION

TRUE-AI enhances the safety of pedestrians within defined zones through the use of **AI and video analysis**. In case potential danger occurs, it **immediately deactivates the robotic cell** or **alerts pedestrians** through audio and visual, contributing to a safer environment.



VISION INSIGHTS & CLOUD MONITORING

The TRUE-AI Cloud platform offers **vision insights** by **storing event-based records** and **providing statistics** for each camera and zone, simplifying the monitoring of **potential dangerous interactions between pedestrians and forklifts**. With its GDPR-compliant system and data insights, True-AI significantly enhances operational safety.



# TRIO SENSE

TRIO SENSE **detects objects in real time, automatically stopping to prevent collisions and enhance MHE safety.** Designed to **minimize risks**, it **protects operators** on electric hand pallet trucks and stackers by **preventing foot injuries, avoiding collisions**, and **issuing siren warnings** in risky situations. The timed bypass button allows safe repositioning after a stop, and the system seamlessly integrates with TRIO SAFE for comprehensive safety.



## PALLET TRUCK SAFETY

TRIO SENSE detects pedestrians in real time, automatically preventing accidents and foot injuries.



## PROACTIVE IMPACT PREVENTION

TRIO SENSE detects objects in real-time, slowing down and stopping only on the way back to prevent impact.

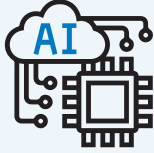
## Protecting Workers with Smart Prevention

Scan the QR code to watch how TRIO SENSE prevents collisions and provides employee safety in real time.

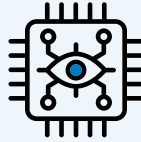




# The Benefits of Trio Mobil's System



**COMPREHENSIVE  
AI & IoT FUSION**



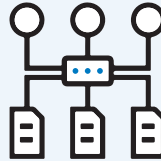
**EDGE - PROCESSING  
AI CAMERA**



**AUTOMATIC FORKLIFT  
SLOW DOWN**



**SMART GEOFENCING  
& ZONE - BASED  
MANAGEMENT**



**FLEXIBLE RULE ENGINE  
FOR CUSTOMIZED  
SCENARIOS**



**INTEGRATION WITH 3RD  
PARTY SYSTEMS  
(TRAFFIC LIGHTS, LEDS, ETC.)**



**AUTOMATED  
ALERTS &  
NOTIFICATIONS**



**DATA ANALYSIS & CLOUD  
MONITORING OF THE  
ENTIRE SYSTEM**



**PLUG & PLAY SYSTEM  
FOR QUICK  
INSTALLATION**

# AI-Powered Ultra-Wideband Technology for Maximum Safety

The Forklift Safety set includes the Forklift Operator Display & Forklift Reader Units, along with the MOBIL-AI camera, providing an additional layer of safety.

### FORKLIFT OPERATOR DISPLAY

Trio Mobil Forklift Operator Display checks if there is a dangerous situation. The device collects the data from the Forklift Reader Units and sends warning signals to the forklift if needed. Whenever it detects a hazardous condition, the Forklift Operator Display decides which rule to execute and delivers the information to the forklift system to perform the related action.

### FORKLIFT READER UNIT

Trio Mobil Forklift Reader Unit device transmits signals to the Forklift Operator Display by communicating with pedestrian safety tags, forklift safety cards, and zone anchors in the area. The Forklift Reader Unit collects data wirelessly and forwards this information to the Forklift Operator Display over a cabled connection.

### MOBIL-AI

MOBIL-AI is a real-time AI camera that utilizes image processing and edge processing technology for real-time pedestrian detection, thereby enhancing workplace safety. Its robust construction, outdoor suitability, and IP protection enhance durability in various environments. It supports up to three cameras, automates alerts, triggers forklift slowdowns to prevent accidents, provides vision insights for continuous safety improvement, and maintains GDPR compliance for data protection and privacy.





# Key Products

## PEDESTRIAN TAGS

A Trio Mobil Pedestrian Safety Tag is a device that communicates with the Forklift Operator Display via the Forklift Reader Unit Wireless connection. The IP65 device is suitable for indoor and outdoor usage. The battery life of the pedestrian tag is approximately 12-14 days.

A standard Micro USB charging cable can charge pedestrian safety tags.



## ULTRA TAG

The Trio Mobil Ultra Tag provides 360° forklift safety, AI-driven accident prevention, and emergency-ready response with SOS and fall detection.

It optimizes workflows with RTLS tracking, enhances ergonomics, and secures access with battery-safe tags for ultimate workplace protection.



## TRUE-AI

TRUE-AI performs Artificial Intelligence analysis through integrated cameras and sensors. It produces high-precision solutions in various occupational safety scenarios by performing image processing and analysis with Deep Learning and Edge Processing.

It runs AI algorithms using Edge Processing and does not require a network connection or cloud server.

- Built-in artificial intelligence chip dual-camera support
- Automatic calibration
- Automatic hardware and software health checks, error correction, and reporting



**TRUE-AI**

# Revolutionizing Safety: Explore Trio Mobil's Advanced Solutions

Discover cutting-edge safety solutions trusted by global industry leaders. From AI-powered forklift safety to real-time video analytics, our innovative technologies prevent accidents and increase efficiency through seamless IoT and AI integration.



Our TRIO SAFE and Fleet Bridge solutions have been successfully deployed at **14 locations**, including RTLS and Emergency Assembly Point solutions in **4 cold storage facilities** at Unilever, resulting in a notable improvement in operational **efficiency** and **safety** measures.



Ford's implementation of TRIO SAFE and RTLS solutions improved safety and yielded a remarkable increase in productivity. This initiative achieved global recognition, earning the prestigious **HSE Competition's Best Practice Award**.



Smurfit Westrock has integrated our cutting-edge TRUE-AI Real-time Video Analytics system to enhance safety across their operations, implementing it across **10+ facilities**. This outstanding approach has been recognized for its excellence, leading to **a rollout across multiple countries**.



Mercedes-Benz

Mercedes-Benz's integration of RTLS structure and an anti-door collision system has not only enhanced safety but also digitized end-of-line operations. This implementation showcases the company's commitment to **creating a safer and more efficient workplace**.

## Discover Safe Operations with Trio Mobil's Cutting-Edge Technology.

Scan the QR code to explore Trio Mobil's Customer Success Stories.





**Our zero-accident goal** helps our customers prevent workplace accidents in their intralogistics operations. Our system combines IoT hardware, AI cameras, and cloud-based software to enhance facility **safety** and **efficiency**.



# TRIOMOBIL

Industrial Safety with AI

Scan the QR code for more information



[www.triomobil.com](http://www.triomobil.com)